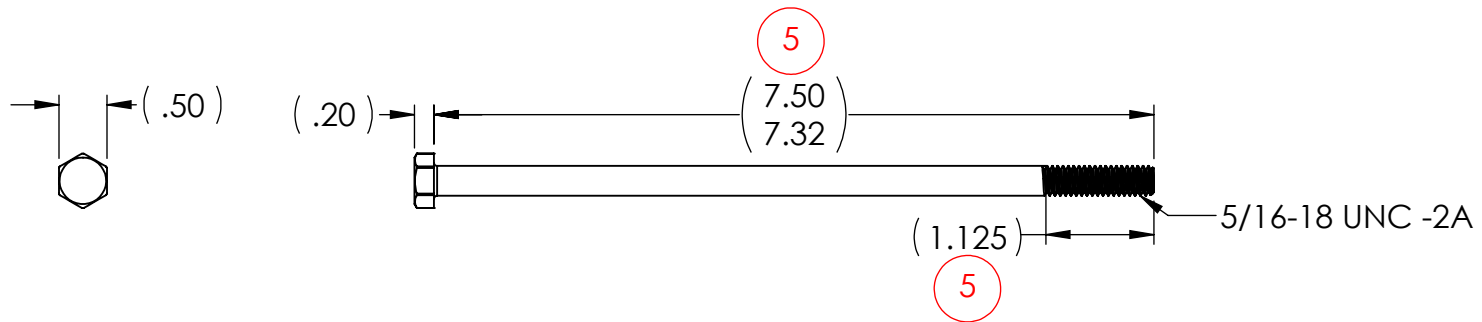
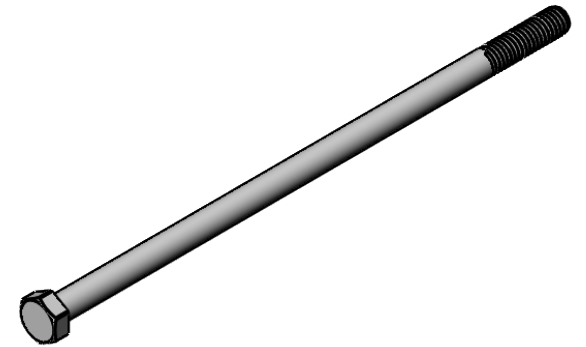


PART NUMBER
700F3663



NOTES:

1. DIMENSIONS: ASME B18.2.1
2. MATERIAL & MECHANICAL PROPERTIES: GRADE A PER ASTM A307
3. THREAD REQUIREMENTS: ASME B1.1, UNC, CLASS 2A
THREAD ACCEPTANCE PER 6.5.1.4 OF ASTM F788
4. HEAD MARKING: MANUFACTURER ID AND 307A
5. FINISH: Fe/Zn 3AN PER ASTM F1941/F1941M

5	011684	03/08/19	SCREW, HHCS, 5/16-18 X 7.5	
REV	ECN NUMBER	DATE		
▶ DENOTES DIMENSION CRITICAL TO QUALITY MATERIAL STEEL, ZINC PLATED			PART NUMBER 700F3663	
NOTICE THIS DRAWING AND THE PRINCIPLES AND ELEMENTS OF DESIGN EMBODIED THEREIN ARE THE EXCLUSIVE PROPERTY OF TUTHILL CORPORATION, TUTHILL TRANSFER SYSTEMS AND ARE NOT TO BE COMMUNICATED, DISCLOSED, REPRODUCED OR USED EXCEPT AS PREVIOUSLY AUTHORIZED IN WRITING BY SAID COMPANY AND MUST NOT BE SUBMITTED TO OUTSIDE PARTIES FOR EXAMINATION WITHOUT THE CONSENT OF SAID COMPANY			UNLESS OTHERWISE SPECIFIED DIMENSIONS ARE IN INCHES TWO PLACE DECIMAL ± 0.01in THREE PLACE DECIMAL ± 0.005in FOUR PLACE DECIMAL ± 0.0005in ANGULAR ± 0.5° MACHINED SURFACE FINISH 64 μ" AA MAX	
MUST BE RoHS COMPLIANT			THIRD ANGLE PROJECTION USED 	DATE 5/20/2009 DWN B.C. SHEET 1 OF 1